

The background of the cover is a collage of industrial images. On the left, there's a large industrial facility with tall towers and complex piping. In the center, a black silhouette of an oil pumpjack is visible against a lighter background. On the right, a person in a dark blue uniform is holding a blue hard hat. The hard hat has the 'Titan Flow Products' logo on it. The top right corner features the company name in a large, stylized font.

Titan

FLOW PRODUCTS

A diagonal section at the bottom left of the cover shows various industrial components. These include two large, dark-colored threaded pipe fittings standing upright, and several smaller, colorful (blue, red, yellow) pipe fittings and valves arranged in the foreground.

PRODUCT
CATALOG

*A leading supplier of fittings, valves and piping products
for oilfield and industrial.*

FLOW PRODUCTS

PIPE NIPPLES



Seamless Nipples

Schedules: STD, 80, S160 and XXH

Material: A106, A333 and 316SS

Diameters: 1/8" thru 6"

Lengths: CL thru 48"

End Connections:

TBE, BXT, BXP, BBE, PBE

Special sizes and split schedules available

SWAGES & BULL PLUGS



Swage Nipples CONC & ECC

Sizes: 1/8" – 8"

Schedules: STD, XH and XXH

End Connections: BXT, BXP, BBE, PBE

Available in 316SS, A234WPBN
and A420WPL6

MSS-SP-95



Bull Plugs

Sizes: 1/4" – 8"

Schedules: STD, XH, XXH

Threaded

Available with Taps

Available in 316SS, A234WPBN
and A420WPL6

MSS-SP-95

Titan

FLOW PRODUCTS

BUTTERFLY VALVES

TITAN BUTTERFLY VALVES



C200 Series – Wafer Butterfly Valve

Sizes: 2" – 24"
Features 4 Alignment Holes, **Pinless Disc**
Lever or Gear Operated
*larger sizes available upon request



LR Series – Wafer Butterfly Valve

Sizes: 2" – 12"
Features long neck and smooth body, **Pinless Disc**
Lever or Gear Operated



LN200 Series Wafer Butterfly Valve

Sizes: 2" – 12"
Features short neck and notches for alignment
Pinless Disc
Available with Double D Stem or **Square Stem**
Lever or Gear Operated



Split Body Wafer Style Butterfly Valve

Sizes: 2" – 12"
Features Teflon Coated Disc and Seat
Pinless Disc
Lever or Gear Operated



T200 Series Butterfly Valve

Threaded Body Style Butterfly Valve
Sizes: 2" – 6"
Lever Operated



C200 Series – Lug Style Butterfly Valve

Sizes: 2" – 24"
Pinless Disc
Lever or Gear Operated
*larger sizes available upon request



LG200 Series Lug Style Butterfly Valve

Sizes: 2" – 12"
Pinless Disc
Lever or Gear Operated
*larger sizes available upon request



LN200 6BT Series Wafer Butterfly Valve

6-Bolt Pattern, **Square Stem**
Sizes: 4" and 5"
Features short neck and notches for alignment
Pinless Disc, **Square Stem**
Lever or Gear Operated



Split Body Lug Style Butterfly Valve

Sizes: 2" – 12"
Features Teflon Coated Disc and Seat
Pinless Disc
Lever or Gear Operated



G200 Series Butterfly Valve

Grooved End Butterfly Valve
Sizes: 2" – 8"
Lever or Gear Operated

TITAN BUTTERFLY VALVE ACCESSORIES



Lever Operators

Sizes: 2" – 12"
10 position Handle
Available for Double D or Square Stem



Gear Operators

Direct Mount
Sizes: 2" – 24"
*larger sizes available upon request



Locking Handle

Sizes: 2" – 12"
10-position Handle
*featured handle with locking plate



Stem Extension

Sizes: 2" – 18"
Lengths: 24" – 72"
*other lengths available upon request



Pneumatic Double Acting Actuator

Sizes: 2" – 12"
14" – 24" available upon request



Pneumatic Spring Return Actuator

Sizes: 2" – 12"
14" – 24" available upon request

INSTRUMENT VALVES

TITAN INSTRUMENT VALVES



Needle Valves

Sizes: 1/4" – 1"
Pressures: 6,000 and 10,000 PSI
NSCWP
Carbon, Stainless Steel
MXF, FXF



Mini Needle Valves

Sizes: 1/4"
Pressures: 6,000 PSI
NSCWP
Carbon, Stainless Steel
Tee, Round Handle
MXF, FXF



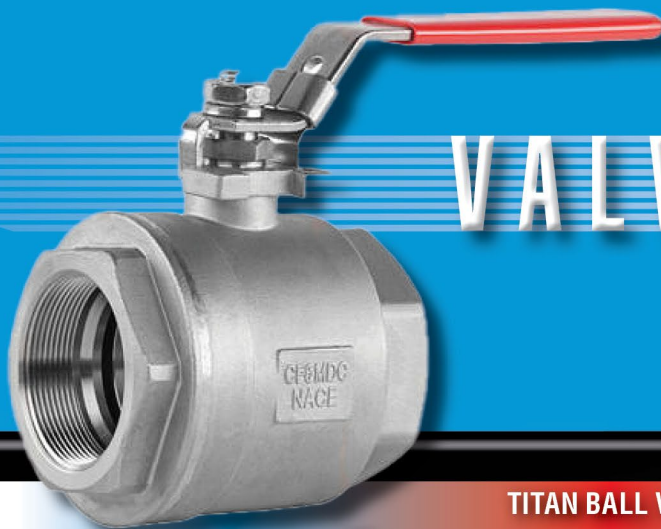
Angle Needle Valve

Sizes: 1/4" and 1/2"
Pressures: 6,000 and 10,000 PSI
NSCWP
Carbon, Stainless Steel



Inline Check Valve

Sizes: 1/8" – 1"
6,000 PSI NSCWP
Stainless Steel
Threaded



VALVES

TITAN BALL VALVES



2-Piece WCB Ball Valve

Sizes: 1/4" – 2"
2,000 PSI NSCWP
Full Port
Threaded Ends
Locking Handle
NACE Compliant



3-Piece Threaded Ball Valve

Sizes: 1/4" – 2", Full or Reduced Port
3,000 PSI NSCWP
Threaded Ends
Locking Handle
NACE Compliant



1500# Oilfield Ball Valve

Sizes: 2"
1,500 PSI NSCWP
Threaded Ends
*available in Standard or NACE Service



5000# Oilfield Ball Valve

Sizes: 1", Full Port
2", Reduced Port
5,000 PSI NSCWP
Threaded Ends
Locking Handle
NACE Compliant



3000# Oilfield Ball Valve

Sizes:
1", 2", 3", Full Port
2", Reduced Port
3,000 PSI NSCWP
Threaded Ends
Locking Handle
*available in Standard or NACE Service



Stainless Steel Ball Valve

Seal Welded – 2-pc Design
Sizes: 1/4" – 2" @ 2,000 PSI NSCWP – Full Port
2-1/2" – 4" @ 1,500 PSI NSCWP
Full Port
Threaded Ends
Locking Handle
NACE Compliant



Grooved Ball Valve

Sizes: 2", 3"
Reduced Port
1,000 PSI NSCWP
Grooved Ends



2000# Oilfield Ball Valve

Sizes: 3/4", 1", 1-1/2", 2", 2-1/2", 3", 4", Full Port
1", 2", 4", Reduced Port
2,000 PSI NSCWP
Threaded Ends
*available in Standard or NACE Service



Bolted Body Ball Valve

Size: 2"
Full or Reduced Port
Pressures: 2,000 & 3,000 PSI NSCWP
Threaded Ends
Available in Standard or NACE Service



EUE Ball Valve

Sizes: 2-3/8" and 2-7/8"
Full Port
3,000 PSI NSCWP
8 Round Threaded Ends
NACE Compliant



Barstock Ball Valve

1-piece design
Sizes: 1/4" – 2"
2,000 PSI NSCWP
Reduced Port
Threaded Ends
NACE Compliant



High Pressure Threaded Ball Valve

Sizes: 1/4" – 2"
6,000 PSI NSCWP
Full Port
Locking Handle
NACE Compliant
Fire safe



Tank Valve

Sizes: 2", 3", Full Port
2", 3", 4", Reduced Port
2", 3", 4", Vented Ball
1,000 PSI NSCWP
Locking Handle
*available in Standard or NACE Service

TITAN CHECK VALVES



Ductile Iron Check Valve

Sizes: 1" – 4"
Pressure: 2,000 PSI NSCWP
NACE Compliant



WCB Check Valve

Sizes: 1" – 3"
2" @ 3,000 PSI NSCWP
NACE Compliant



Inline Check Valve

Sizes: 1/8" – 1"
6,000 PSI NSCWP
Stainless Steel
Threaded

TP

Titan

FLOW PRODUCTS

TITAN TANK VALVES AND FITTINGS



Mud Tank Unions
Sizes: 3" – 16"
*O-Rings are also available



Frac Tank Unions
Sizes: 6", 8"
*Individual parts are also available

TITAN RUBBER GOODS



T Gasket
Sizes 1" – 10"
Buna or Viton



Sleeve Coupling Gasket
Sizes: 1" – 12"
Buna or Viton



**O-Ring, Seal Ring
and Metal-backed
Seal Ring**



HAMMER UNIONS

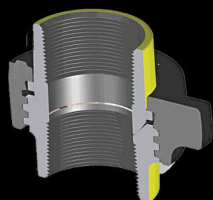


Figure 100
1,000 PSI NSCWP
Sizes: 2" – 8"
Threaded, Butt Weld,
Socket Weld

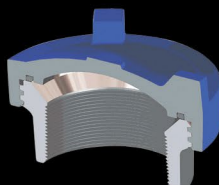


Figure 207 – Blanking Union
2,000 PSI NSCWP
Sizes: 3", 4"
Threaded, Butt Weld,
Socket Weld

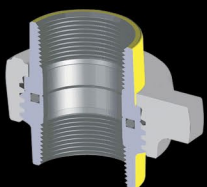


Figure 301
3,000 PSI NSCWP
Size: 2"
Threaded, Socket Weld

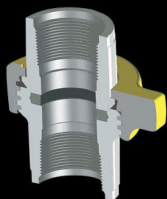


Figure CGC
6,000 PSI NSCWP
Sizes: 1-1/2" and 2"
Threaded Ends

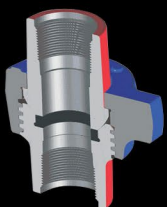


Figure 1502
15,000 PSI NSCWP
Sizes: 1" – 5"
Threaded, Butt Weld



Sour Gas Service Unions
Sizes: 2" and 3",
Figure 1502
2"– 6", Figure 200,
Figure 206
*other sizes and figures
available upon request



Snap Rings
Sizes:
1" – 3", Figure 1502
4" – 5", Figure 1002

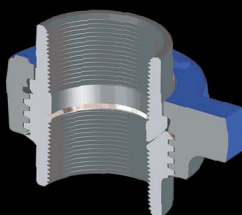


Figure 200
2,000 PSI NSCWP
Sizes: 1" – 10"
Threaded, Butt Weld

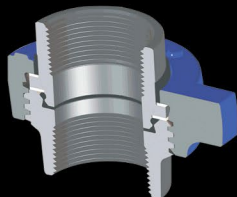


Figure 211 – Insulating Union
2,000 PSI NSCWP
Sizes: 2", 3"
Threaded Ends

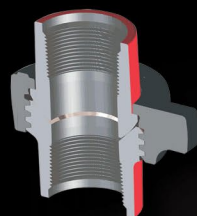


Figure 400, 402
4,000 PSI NSCWP
Sizes: 2" – 4",
Threaded Ends
12" Threaded, Butt Weld
*Figure 402 – seal ring
design

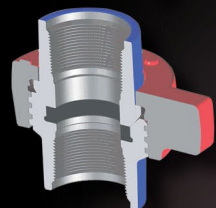


Figure 1002
10,000 PSI NSCWP
Sizes 1" – 5", Threaded or
Butt Weld
6" Butt Weld
5" Threaded @ 5,000 PSI
NSCWP
5" and 6" Butt Weld @ 7,500
PSI NSCWP

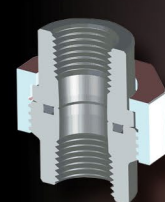


Figure OCT
3,000 PSI NSCWP
Sizes: 1" and 2"
Threaded Ends
*available in insulated
option



Solid Male Sub
Figures: 200, 206, 602,
1002, 1502
Sizes: 1" – 5"
*available sizes and
figures vary



Segments
Sizes: 1" – 3", Figure 1502
Come in sets of 3

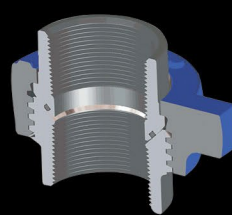


Figure 206
2,000 PSI NSCWP
Sizes: 2" – 10"
Threaded, Butt Weld,
Socket Weld

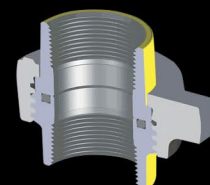


Figure 300 – Flat Face Union
2,000 PSI NSCWP
Size: 2"
Threaded Ends

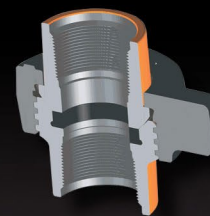


Figure 602
6,000 PSI NSCWP
Sizes: 1" – 4"
Threaded, Butt Weld

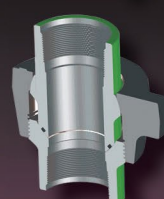


Figure 1003 – Mis-aligning Union
7,500 PSI NSCWP
Sizes: 3" – 5"
Threaded, Butt Weld



Figure 201
EUE Hammer Unions
Sizes: 2", 2-1/2"
3,000 PSI NSCWP



Solid Female Sub
Figures: 200, 206, 602,
1002, 1502
Sizes: 1" – 5"
*available sizes and
figures vary



**O-Ring, Seal Ring
and Metal-backed
Seal Ring**

FITTINGS AND CONNECTIONS



Sleeve Couplings

Diameters: 2" – 16"

Lengths: 5" – 24"

Materials: Buna

*Viton and EPDM available upon request – lengths vary per diameter

*replacement parts available



Expansion Joints

Sizes: 2" – 12"

150# Flange x Flange

Materials: Buna (Nitrile), EPDM or Viton

*other sizes available upon request



Flange Adapter

Flange x Thread

Sizes:

4 Fig 200 Fem X 4 125 Flange

4 Fig 200 Fem X 4 150 Flange



Hinged Lever Grooved Coupling

Sizes: 2" – 10"

*Gaskets are available.



Bolt Style Grooved Coupling

Style 77

Sizes: 2" – 18"

*Gaskets are available.



Forged Steel Fittings

Sizes: 1/4" thru 4"

Class: 2000, 3000 & 6000

End Connection: Threaded

Material: A105N, A350LF2





8524 Roper Road NW
Edmonton, AB T6E 6V4

Phone: 587.410.8373

titanflowproducts.com